

Technical datasheet - S9132



EMOS spol. s r. o.
 Tel: +420 581 261 172
 Email: emos@emos.eu
 Web: www.emos.eu

Logistic information

Type	UTP CAT6 LSZH
Order Nr.	23 09 020 020
Comm. Nr.	*S9132
EAN pc	8592920000069
EAN export carton	8592920000076

Product description

- 100 Base-T4
- 100 Base-TX
- 100VG - AnyLAN
- 1000 Base-TX (Gigabit Ethernet)
- 155 Mbps ATM
- 622 Mbps AT

Meets standards requirements

CSN EN 50173 CLASS E	IEC 61156-5 Ed. 2
EIA/TIA 568-B.2-1 Cat 6	EN 50288-6-1
ISO/IEC 11801 CLASS E	

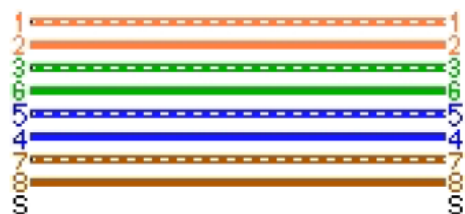
Cable construction

Twisted pair	4 x
Number of wires	4 x 2
Inner conductor	Bare copper wire
AWG	23
Wire Diameter (mm)	0,55
Insulation of conductors	HDPE
Average Thickness (mm)	0,22
Tension element	Nylon 150D

Cable jacket

Thickness (mm)	1,1
Diameter (mm)	6,30
Color	purple

Color coding of wires



Marking

UTP Cat5E LSZH	1 - 305 m
----------------	-----------

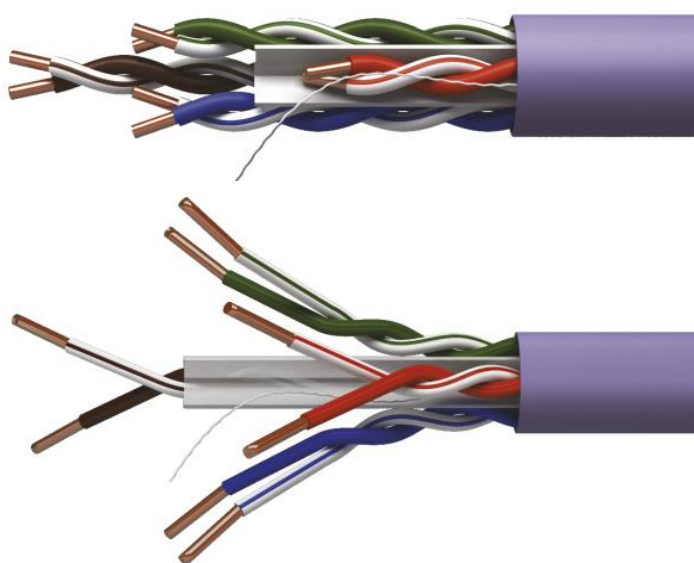
Packing

305 m/ paper box
 Material: 5 layer cardboard, painted with printing

Mechanical properties

Max. DC resistance at 20 ° C	94,8 Ω/Km
Operating temperature	60 ° C
Shortening factor	65%

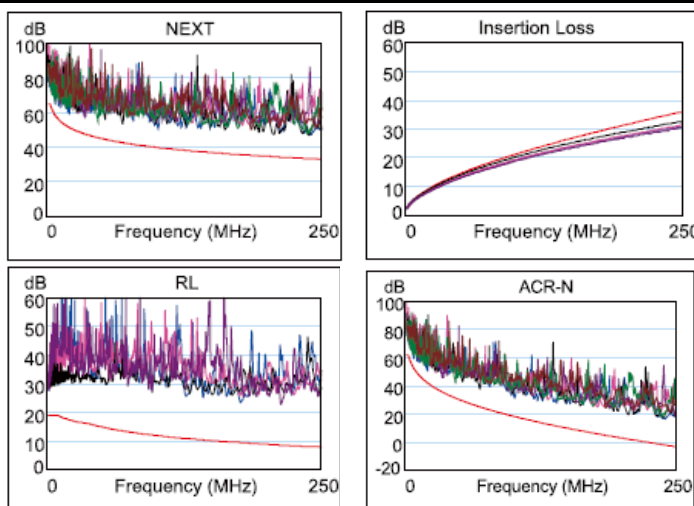
Cable structure



Cable crosscut



Reference measurement



Package preview

